

2014 LEED Performance

Reliable Controls Corporation - South Annex

Monthly Energy Consumption



Energy Consumption vs Target



Reliable Controls MACH system calculates a daily target for energy consumption, based on 50% of ASHRAE standard 90.1, adjusted for actual heating and cooling degree days. Standard 90.1 is used to predict the energy consumption of an energy efficient building in our geographical region.

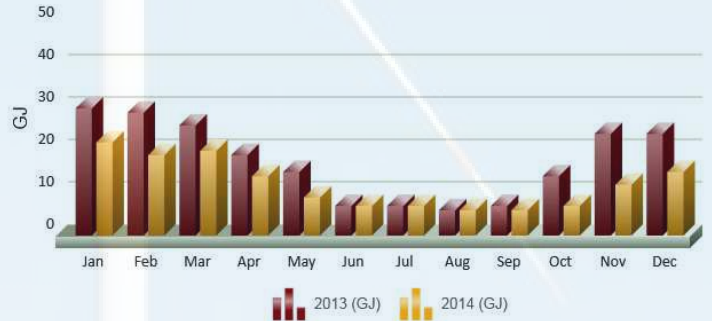
In 2014, the actual energy consumption of the South Annex exceeded target during the winter months, but was consistently on or below target from May onward. For the year 2014, the actual energy consumed was 53.5% of ASHRAE 90.1. This result shows good progress from 2013, when the total energy was 59%.

In 2015, we will try very hard to reduce the total energy consumption of the South Annex to below target! When we reach 50%, the South Annex will be using one half the energy of an energy efficient building!!!

Electrical Consumption 2013 vs 2014

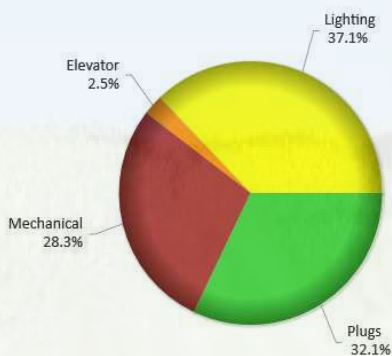


Gas Consumption 2013 vs 2014



Gas consumption was reduced markedly in 2014, mainly through BAS programming changes that minimized the use of gas for building heat. Most building heat is now supplied by high efficiency electric heat pumps.

Electrical Consumption Breakdown



The pie chart to the left shows that lighting is the greatest consumer of electricity, and is therefore the number one target for improvement.

The water consumption comparison to the right shows the increased potable water consumption in the summer months, when irrigation was required. We were also forced to use potable water to flush toilets from June through September, while enjoying a beautiful summer with very low rainfall.

In 2015, the LEED program requires us to disable potable water irrigation to most of our site. Hopefully the various plantings of indigenous, drought tolerant species will survive!

